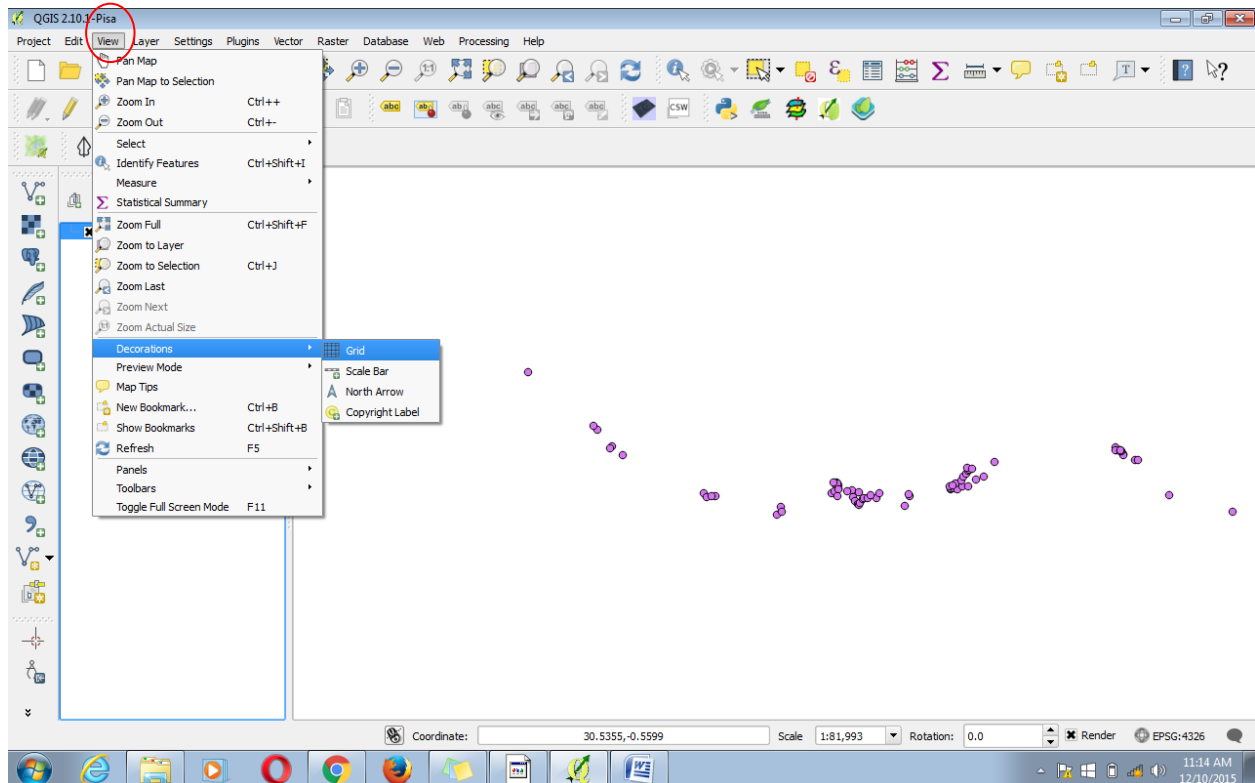


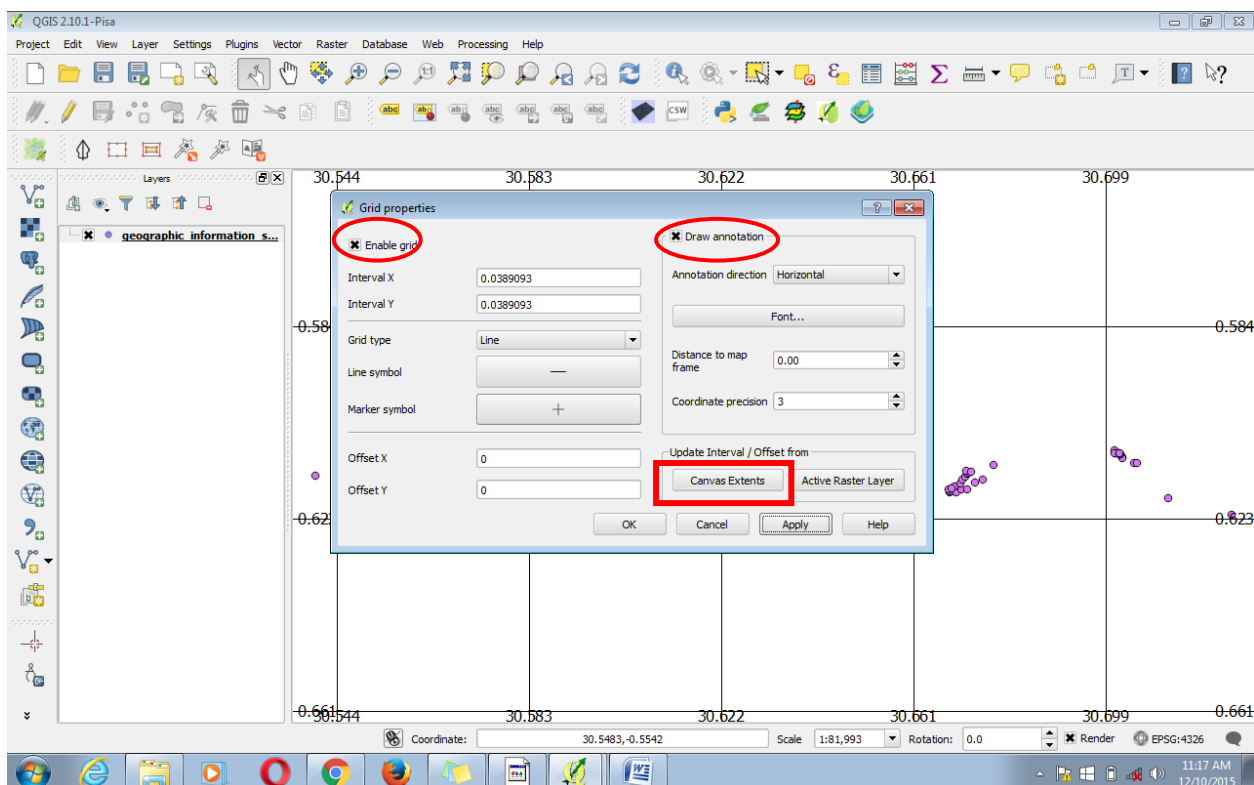
Integrating Grid Lines, Scalebar, North Arrow To The QGIS Map Interface

Grids make your map look professional and it's always great to have them for this tutorial, you will learn how to activate grid lines to your map canvas

- Click **View** on the Menu bar
- Look for **Decorations** and click on **Grid**

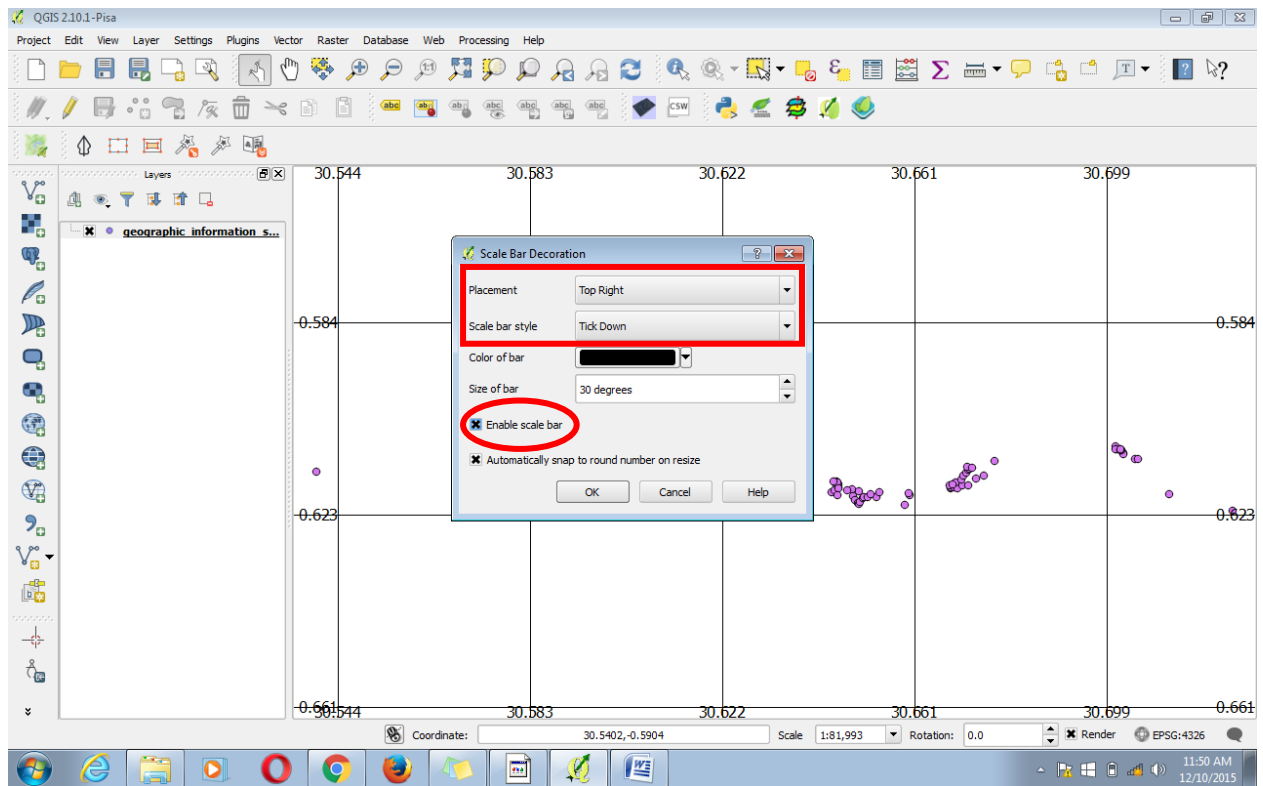
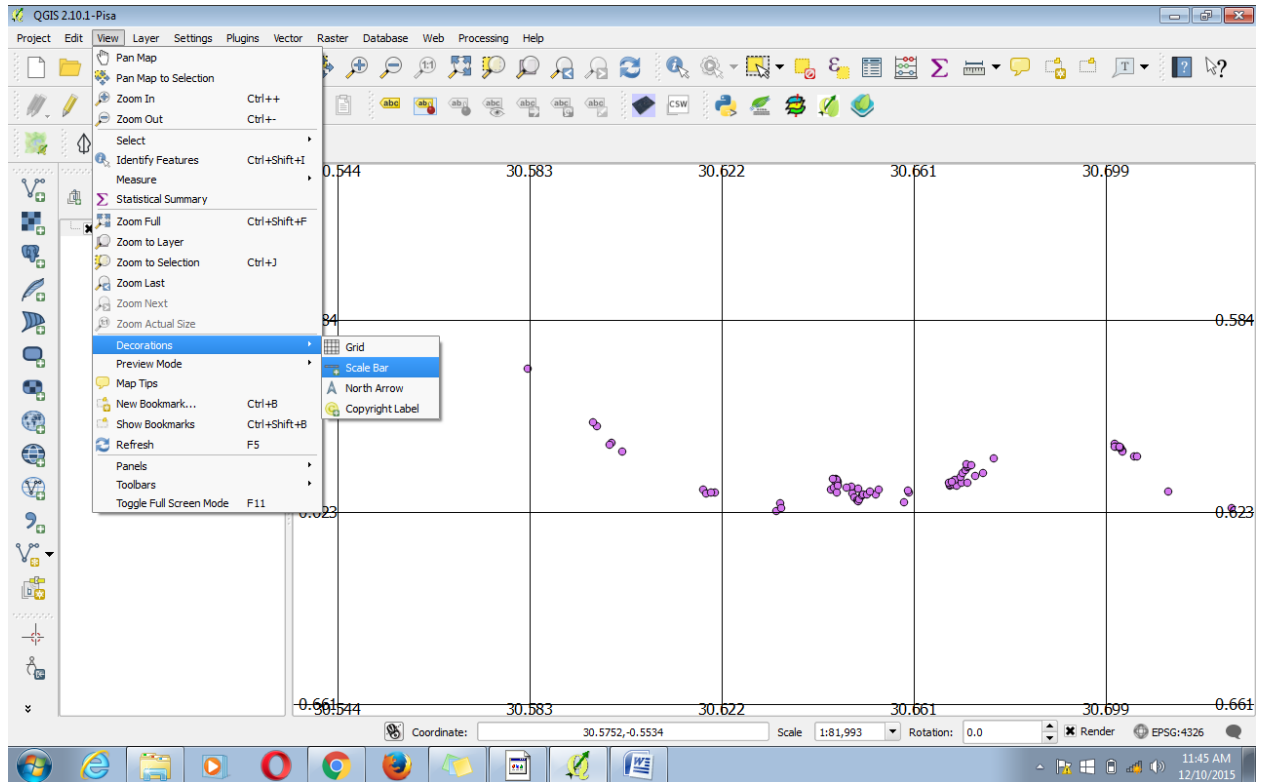


- Click **Enable Grid**
- The **interval X, Y** determines the distance/interval between gridlines, the smaller the distance the closer your gridlines are.
- Click the **Draw annotation** button to activate the labels/numbering on the gridlines
- For automatic adjustments of the grids, go under the “**update interval/offset from**” and click on



Canvas Extents, this will adjust the gridlines to fit the map canvas extent.

- Experiment with the “**Marker symbol**” and adjust “**Distance to map frame**” and “**coordinate precision**”
- Click on apply or ok, if you are happy with the appearance.



- The **“Placement”** refers to your preferred location for the scale on the map window

4th Floor-Outbox, Soliz House, Plot 23, Lumumba Avenue, Nakasero, Kampala-Uganda. Mobile: +256 778 082 563/+256 712 593 775

Email: info@geoinfo-solutions.com [Facebook](#) | [Blog](#) | [Linkedin](#)



- **“Scale bar style”** refers to the design of the scalebar
- **“Enable”** the Scalebar before clicking OK.

Experiment the same procedure for **North Arrow** and **Copyright** options

